

# On-Farm Water Management Program

Using funding through the Kentucky Agricultural Development Board, the Kentucky Water Resources Board is seeking applications for projects that address water management on farms. The program seeks to:

- Implement Water Quantity Best Management Practices (BMP)
- Develop Innovative NEW Practices
- Adapt old practices to a new use
- Assess the economic feasibility and long term viability of new or existing BMPs
- Share results through publications, farm field days, or public tours

The program contains 2 project categories:

## Research, Development, and Demonstrations Farms (RDD)

- Water management projects on public, regional farms
- Involving multiple practices
- Made available for public tours, inquiries
- Up to \$250,000 per project

## Practical Implementation Projects (PIP)

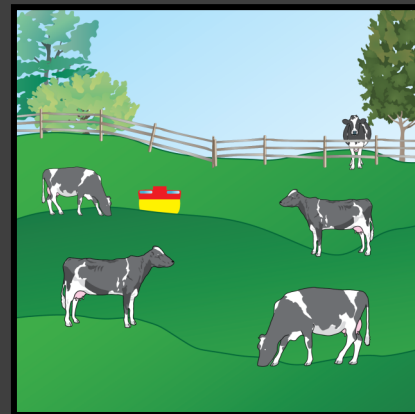
- Private farms wishing to implement best management practices for water quantity
- Up to \$50,000 per project

## To Apply:

For more information, visit the KADF Program Portal and select **KADF Project Application**:

<https://agpolicy.ky.gov/funds/Pages/program-portal.aspx>

All applicants must schedule a site visit with the OFWMP Technical Advisory Group (TAG). The TAG is also available to assist with questions about the application process.



*Please contact the  
OFWMP Technical  
Advisory Group for  
more information:*

**Dale Booth**

Phone:

502-782-6895

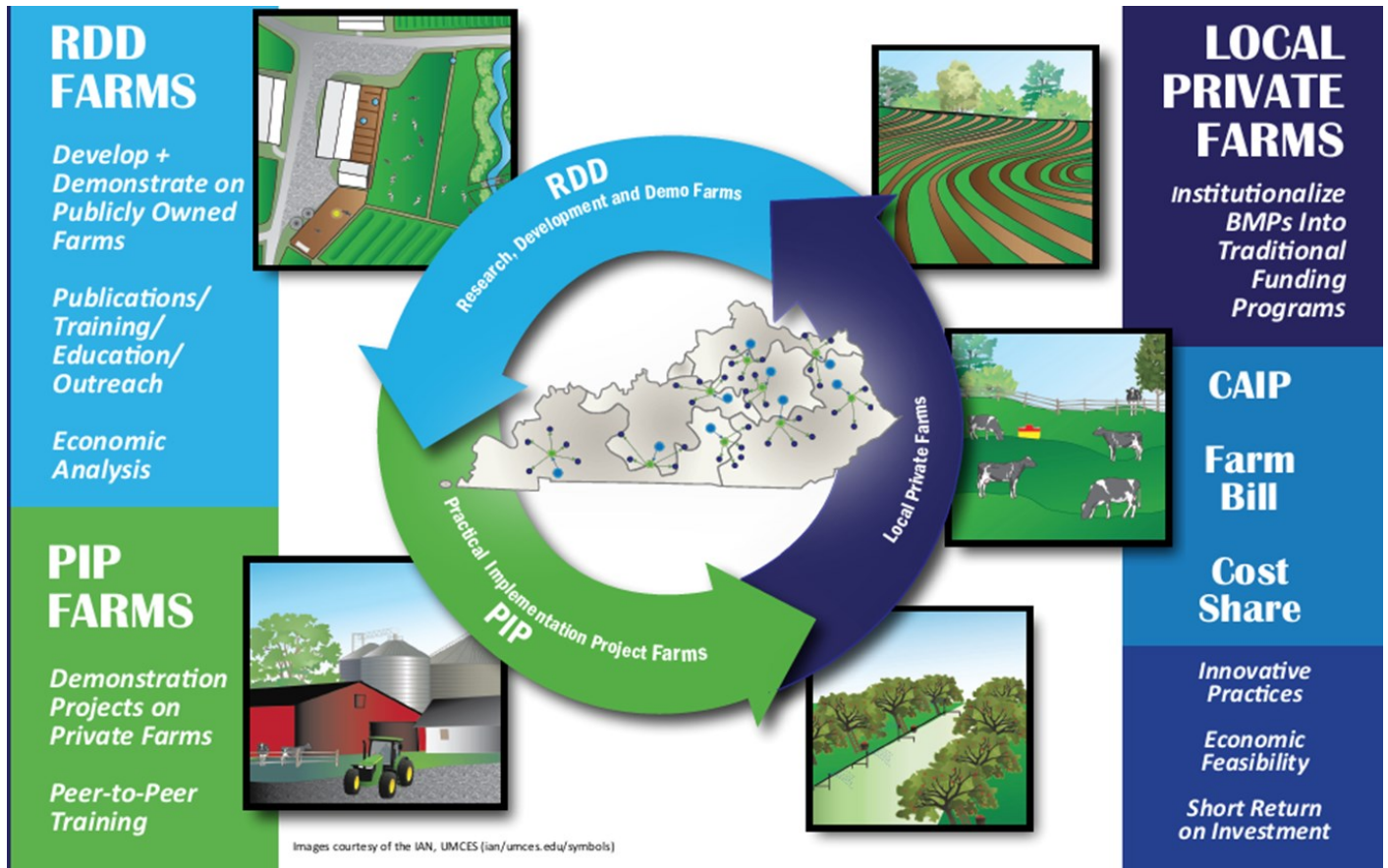
Email:

[Dale.Booth@ky.gov](mailto:Dale.Booth@ky.gov)

# OFWMP Program Goals

To promote innovation in on-farm water management, increase on-farm water availability and farm profitability, institutionalize practices into traditional funding programs, and normalize innovative practices.

To coordinate efforts with individuals and entities interested in the long-term science and planning of water resources.



## Long Term Vision

- ◆ As RDDs are recruited they will become regional demonstration sites that producers and the general public will visit to learn about Water Quantity BMPs. These farms will also be expected to publish their findings about the viability and efficiency of the BMPs that they are implementing on their operations in some form.
- ◆ The PIP farm projects will grow out of the RDD projects as they apply RDD tested BMPs on their operations, and/or adapt their ideas to the scale of their farms.
- ◆ As new practices are shown to be viable, they will be incorporated into existing farm projects like Cost Share and CAIP.